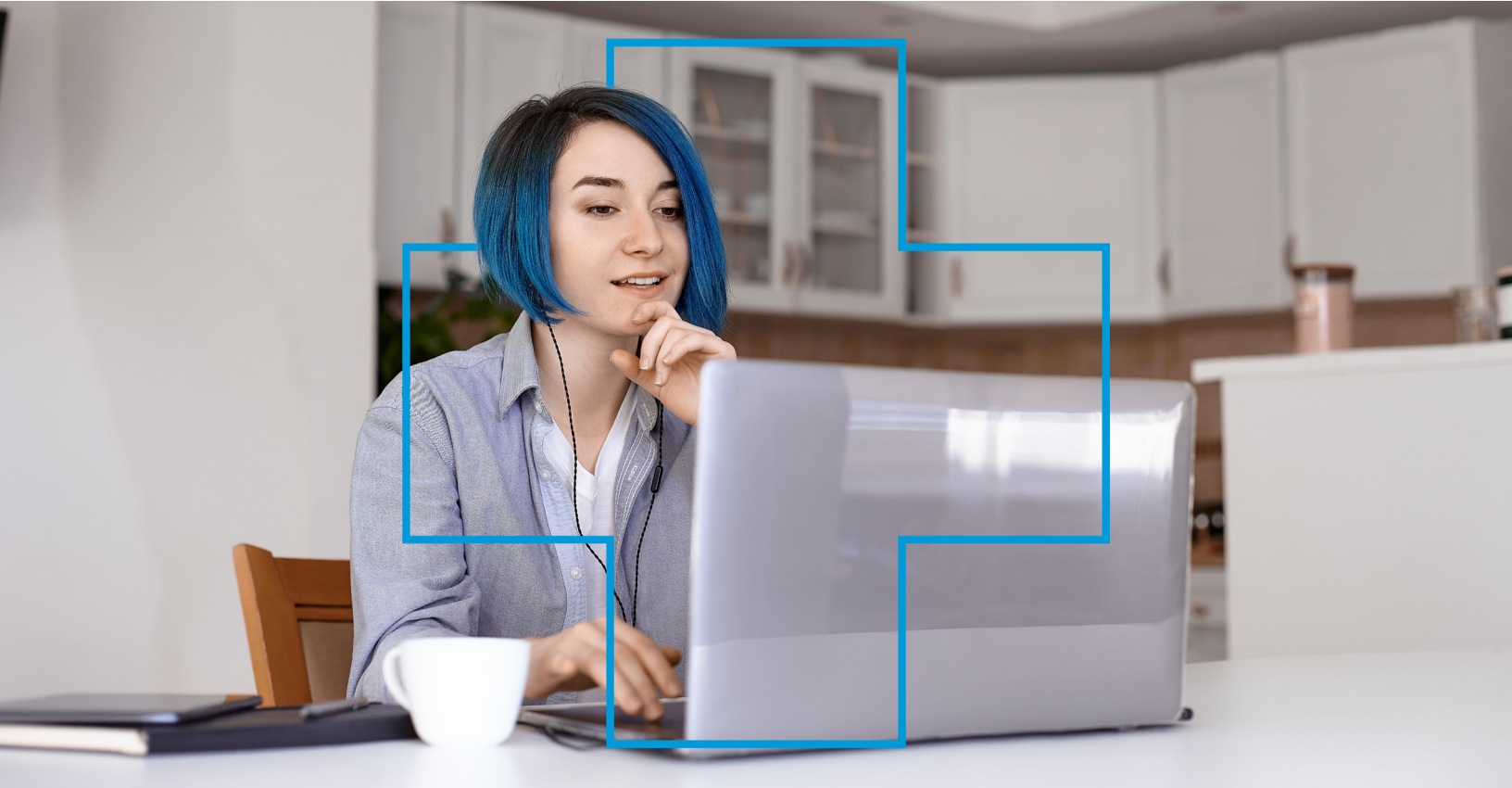


Blue Cross Health™

A PLAN THAT'S RIGHT FOR YOU



Assured Access Rate Guide

FLEXIBLE. PERSONAL. AFFORDABLE.

Available to residents in Atlantic Canada



Assured Access is mandatory (Underwritten benefit)

AGE	Assured Access		
	SINGLE	COUPLE	FAMILY
0-29	24.96	37.45	44.56
30-44	24.96	37.45	44.56
45-54	28.55	41.01	48.15
55-64	32.11	44.56	51.70
65+ No AD&D	34.65	46.15	53.24
AD&D Rates	1.00*	2.00**	2.00**

Legend

*One aged 65 or over, no AD&D; one adult under 65 with AD&D.

**One aged 65 or over, no AD&D; one adult under 65 and dependent(s) with AD&D.

¹One aged 65 or over, no benefits; one adult 65 and under with benefit.

²One aged 65 or over, no benefits, one adult under 65 and dependent(s) with benefits.

Optional Benefits: you may choose the following modules. (Underwritten benefits)

AGE	Critical Illness				Hospital Cash				Travel		
	SINGLE	COUPLE	FAMILY		SINGLE	COUPLE	FAMILY		SINGLE	COUPLE	FAMILY
0-29	3.15	6.23	8.19		4.82	11.05	14.15		13.41	19.81	21.59
30-44	3.15	6.23	8.19		5.31	11.11	16.13		15.52	22.92	24.98
45-54	9.57	19.13	20.96		8.69	14.96	17.86		21.48	35.86	45.39
55-64	24.63	49.26	51.41		13.31	19.93	24.33		26.92	44.85	56.67
65+	N/A	24.64 ¹	26.79 ²		14.75	23.58	27.25		35.88	59.65	75.58

Dental Benefits: you may choose one of these modules. (No medical underwriting)

AGE	Entry				Essential				Enhanced		
	SINGLE	COUPLE	FAMILY		SINGLE	COUPLE	FAMILY		SINGLE	COUPLE	FAMILY
0-29	22.35	34.72	45.64		41.17	63.45	92.88		80.10	143.92	193.78
30-44	26.48	41.45	64.12		44.40	67.83	114.56		84.66	153.01	228.56
45-54	29.33	47.67	81.72		49.15	74.50	133.54		89.60	157.73	242.57
55-64	31.26	55.39	90.87		50.20	99.53	153.45		90.94	173.48	245.20
65+	34.21	64.73	99.72		54.24	115.76	164.03		94.21	174.99	252.44